



Wisconsin Tuberculosis (TB) Program Updates

Claire Leback, RN BSN MPH

Wisconsin Tuberculosis (TB) Program

Wisconsin TB Virtual Summit

April 1, 2025

Agenda

Brief Overview of the Wisconsin TB Program

- Functions and Relationship with Local Public Health

Statewide Concerns

- Medication Shortages and Price Increases
- TB Class B Arrival Updates

New Resources

Wisconsin TB Awareness Week! March 23–29

[Link to proclamation](#)



Agenda

Brief Overview of the Wisconsin TB Program

- Functions and Relationship with Local Public Health

Statewide Concerns

- Medication Shortages and Price Increases
- TB Class B Arrival Updates

New Resources

Functions of the Wisconsin State TB Program

Ensure patients with suspected or confirmed TB disease or latent TB infection (LTBI) have ready access to diagnostic and treatment services that meet national standards.

Provide consultation, technical assistance, education, and training in the clinical and public health aspects of TB.

Plan and develop statewide TB control policies and procedures.

Assure statewide TB surveillance.

Functions of the Local and Tribal Health Departments



- Patient assessment
- Case management
- Patient education



- Directly observed therapy (DOT)
- Toxicity and therapy monitoring



- Initiating and discontinuing isolation
- Assessment of isolation options

Functions of the LTHDs



- Patient assessment
- Case management
- Patient education



- Directly observed therapy (DOT)
- Toxicity and therapy monitoring



- Initiating and discontinuing isolation
- Assessment of isolation options

Functions of the LTHDs



- Patient assessment
- Case management
- Patient education



- Directly observed therapy (DOT)
- Toxicity and therapy monitoring



- Initiating and discontinuing isolation
- Assessment of isolation options

Functions of the LTHDs



Facilitation of safe discharges
from the hospital



Identification and assessment of
contacts

Functions of the LTHDs



Facilitation of safe discharges
from the hospital



Identification and assessment of
contacts



How Does the Wisconsin TB Program Support LTHD Functions?



Wisconsin TB Programs Supporting LTHD Functions

Wisconsin TB Dispensary

Uses state tax revenue funds to **reimburse LTHDs for medical management of patients.**

Wisconsin TB Treatment Assistance Program

Uses CDC Cooperative Agreement funding to provide **incentives and enablers for those being treated for TB/LTBI.**

Wisconsin TB Dispensary Program (WTBDP): Purpose Statement

To ensure that all persons in Wisconsin with suspected or confirmed active TB disease or latent TB infection (LTBI) can receive appropriate evaluation, treatment, and monitoring, regardless of insurance availability.



The WTBDP reimburses services for the uninsured and underinsured.





Challenge

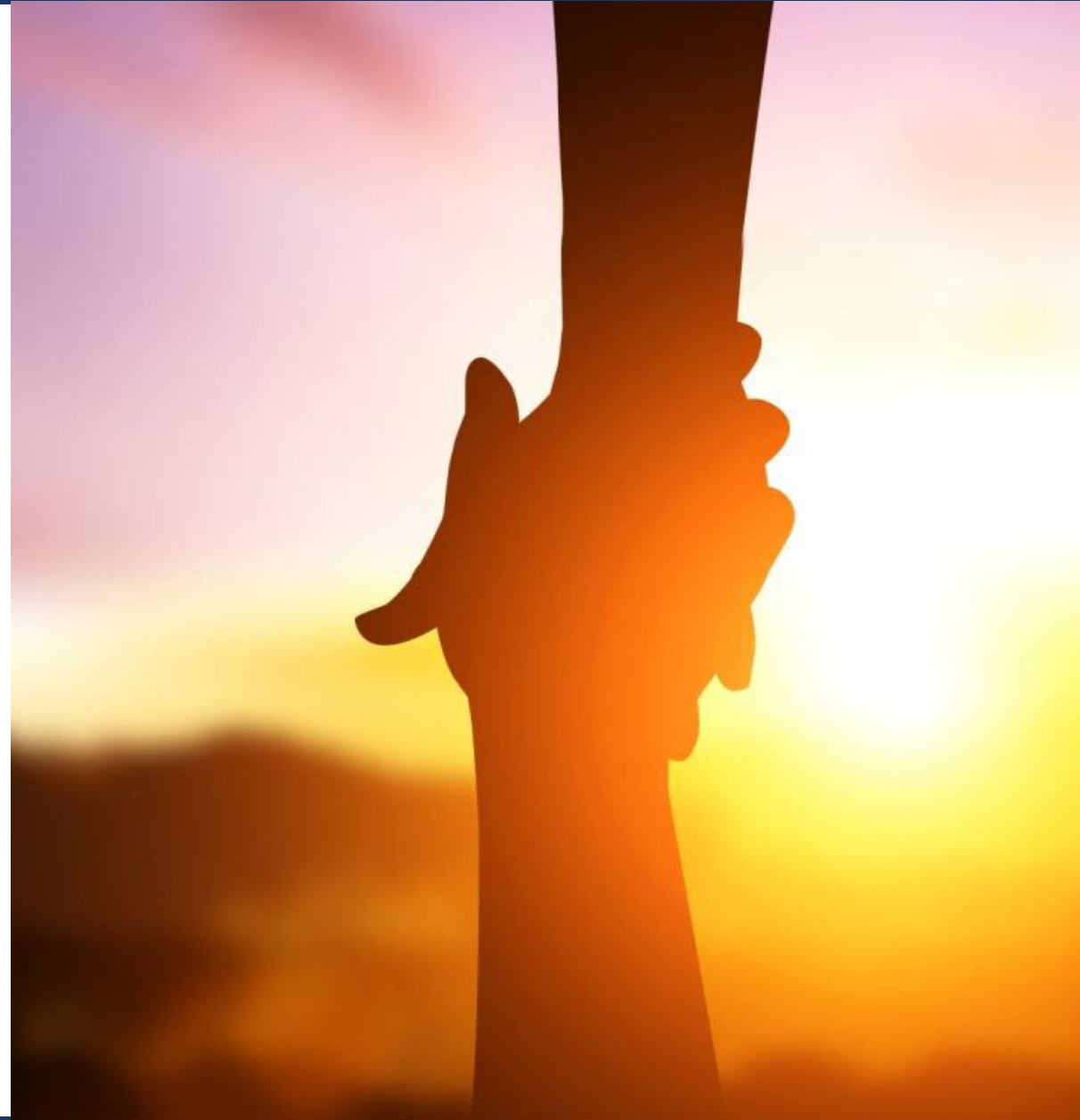
Difficult to find private health care partners willing to enter a memorandum of understanding (MOU) to serve the needs of patients with TB and LTBI through the Wisconsin TB Dispensary Program.

Wisconsin TB Treatment Assistance Program

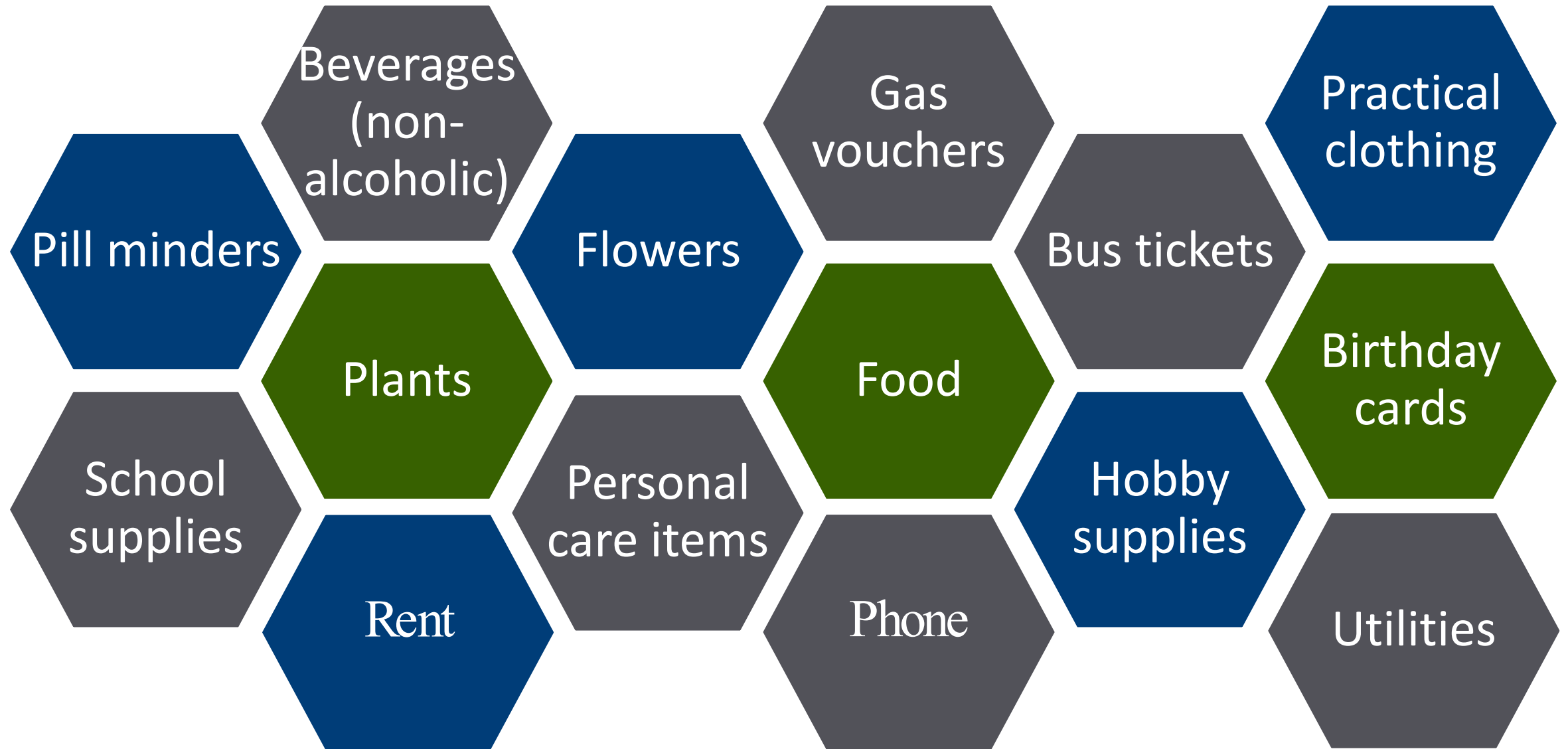
Encourages and supports clients through the completion of TB treatment.

Provides funding to purchase treatment assistance aids.

Capped at \$50 (LTBI) and \$200 (active).



Wisconsin TB Treatment Assistance Program



TB Treatment Assistance Program

Examples of TB treatment assistance above the capped rate include:



Payments for housing (rent or mortgage)



Payments for utilities



Payments for cell phone

Agenda

Brief Overview of the Wisconsin TB Program

- Functions and Relationship with Local Public Health

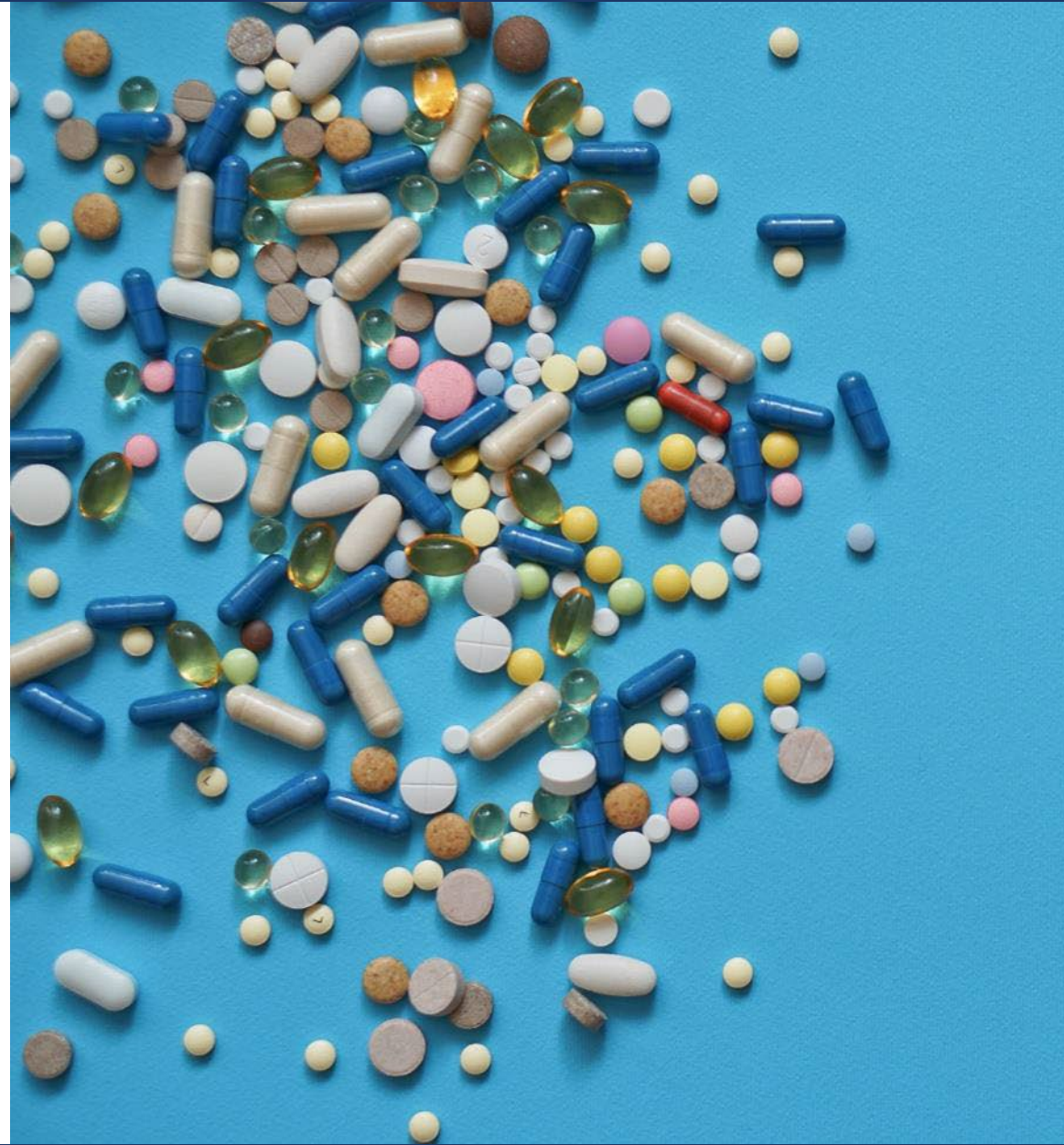
Statewide Concerns

- Medication Shortages and Price Increases
- TB Class B Arrival Updates

New Resources

Medication Shortages

- Priftin® (Rifapentine)
- Rifampin
- Isoniazid
- Moxifloxacin



Two Types of Shortages

Manufacturer: A period of time when the demand or projected demand for the drug within the United States exceeds the supply of the drug. (FDA definition)

Challenges of Allocation: Distribution of medication supply in such a way that local supply cannot meet local demand.

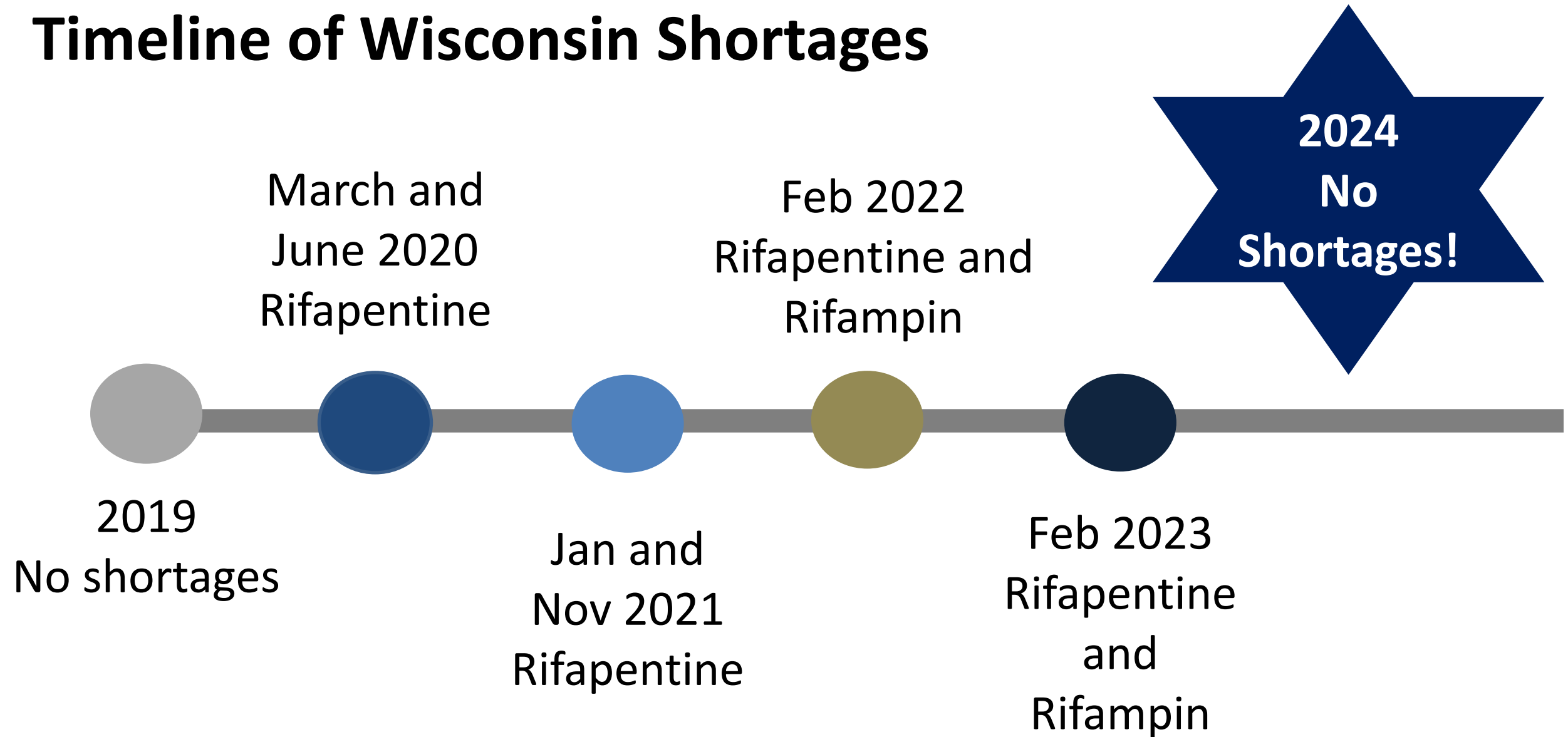


Shortages Listed on FDA Website:

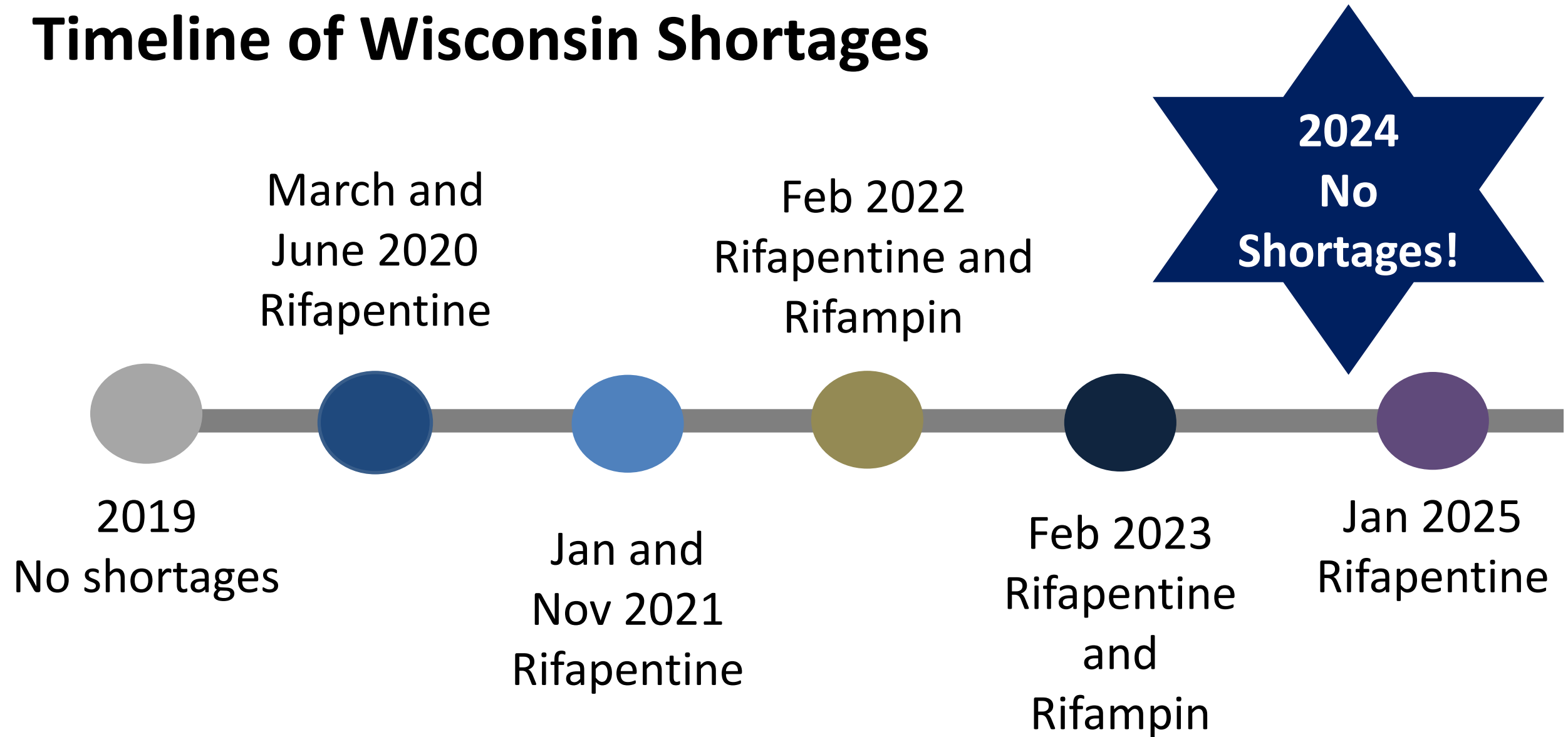
- **Rifapentine** since March 2020
- **Rifampin (IV and PO)** since December 2021
- **Isoniazid 100mg** in May 2021 (removed)

Local **Moxifloxacin** shortages have been reported since 2023.

Timeline of Wisconsin Shortages



Timeline of Wisconsin Shortages



Medication Shortages Have...

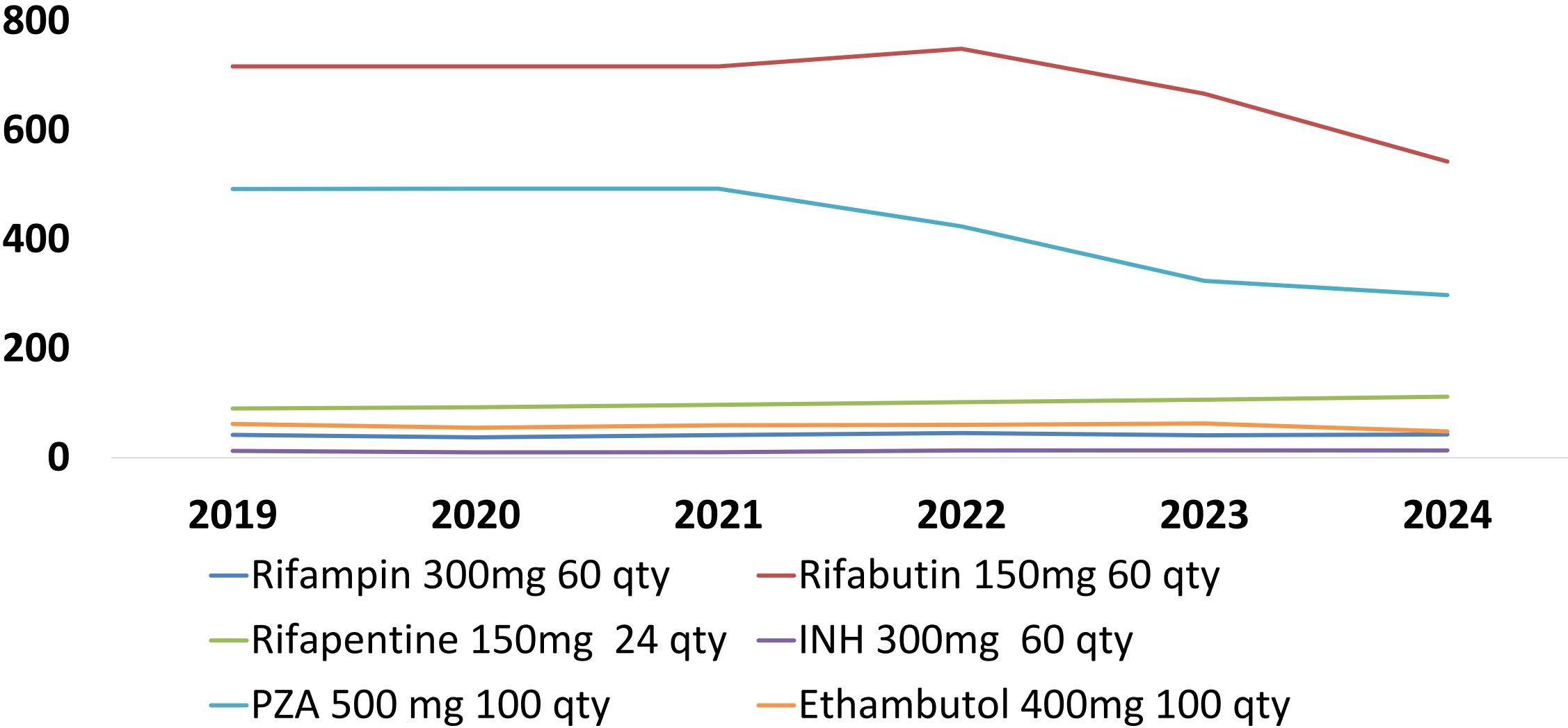
- **Not affected** the ability of WTBP to fulfill orders for **RIPE** but have **affected** utilization of preferred **LTBI** regimens.
- **Prevented** widespread use of the **4-month HPMZ** regimen.
- **Changed** how WTBP manages **medication procurement**.



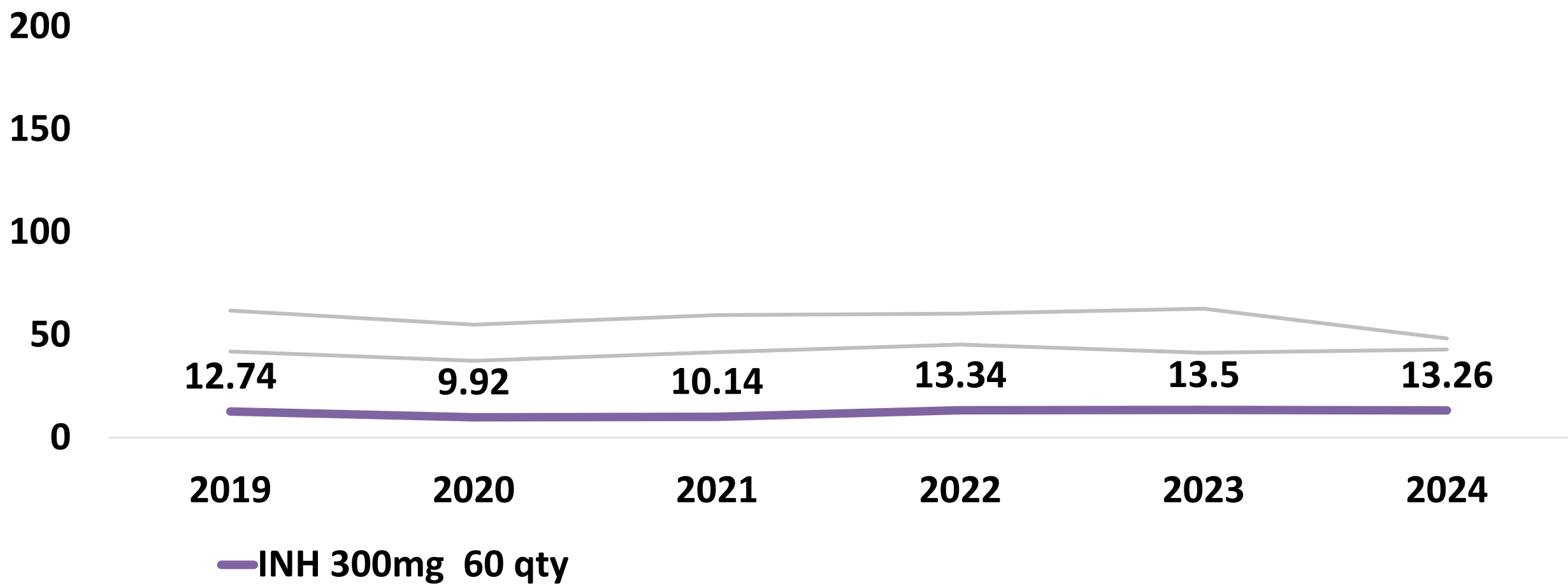
Price Increases—Isoniazid (INH)

- Large manufacturer of INH, TEVA, divested to Genus Life Sciences in late 2024.
- Wisconsin TB Dispensary pharmacy noted 13x increase in cost for alternatives.
- Similar price increases were reported by other Wisconsin pharmacies.

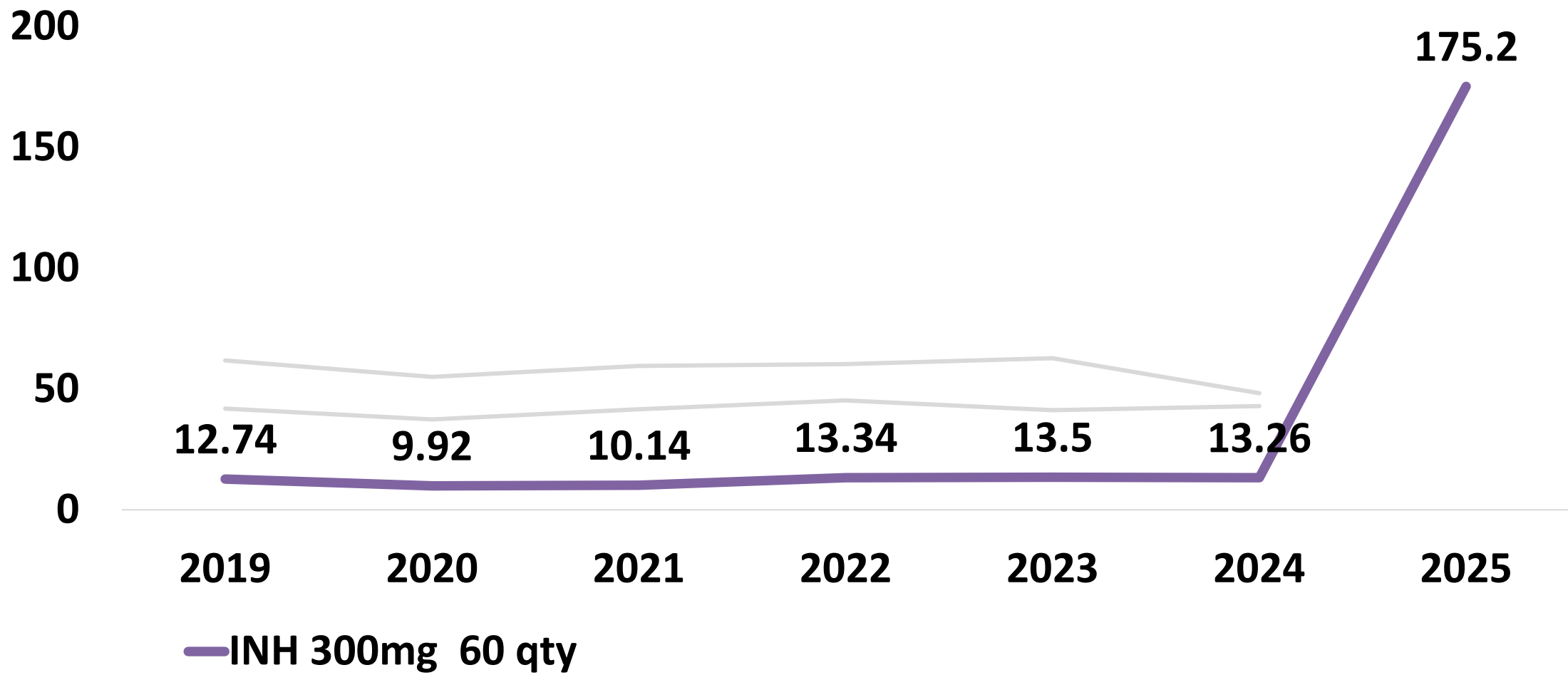
WTBP Tracks Medication Reimbursement Rates



Medication Reimbursement Rate For INH Remained Stable From 2019 to 2024



Medication Reimbursement Rate For INH Increased by 1227% in 2025



Price Increases—Isoniazid (INH)

Wisconsin requested rate review from national Medicaid office so that MA rate better aligns with actual costs.

Increased rate is incorporated in dispensary budget.



Agenda

Brief Overview of the Wisconsin TB Program

- Functions and Relationship with Local Public Health

Statewide Concerns

- Medication Shortages and Price Increases
- **TB Class B Arrival Updates**

New Resources

**If You Have Lungs,
You Can Get TB!**





Challenge

The following programs are currently **suspended**:

- Refugee Program
- Welcome Corp
- Humanitarian Parolee Programs (U4U, Latin America)

Impacts

Wisconsin has seen fewer arrivals with TB B class status in 2025.



Agenda

Brief Overview of the Wisconsin TB Program

- Functions and Relationship with Local Public Health

Statewide Concerns

- Medication Shortages and Price Increases
- TB Class B Arrival Updates

New Resources

Expanded Patient Education Materials

Now in English, Rohingya, Vietnamese, Somali, Hindi, Hmong, Burmese, Spanish, Russian, Dari, Kirundi, and Ukrainian

<https://www.dhs.wisconsin.gov/tb/about.htm>

Frequently asked questions

[Close all](#) [Open all](#)

How is active TB disease spread?	+
What are the signs and symptoms of active TB disease?	+
What should you do if you are exposed to active TB disease?	+
What is bovine TB?	+

Resources

Department of Health Services resources

- [Active Tuberculosis Disease Fact Sheet, P-42099](#) – A fact sheet with information on TB infection and TB disease, how TB spreads, signs and symptoms, prevention, and treatment, available in English, Rohingya, Vietnamese, Somali, Hindi, Hmong, Burmese, Spanish, Russian, Dari, Kirundi, and Ukrainian.
- [Latent Tuberculosis Infection Fact Sheet, P-42099b](#) – A fact sheet with information on TB infection, medicine, testing, prevention, and treatment, available in English, Rohingya, Vietnamese, Somali, Hindi, Hmong, Burmese, Spanish, Russian, Dari, Kirundi, and Ukrainian.
- [Financial Assistance for TB or LTBI - Fact Sheet, P-03549 \(PDF\)](#): A fact sheet to spread awareness of financial resources available to TB / LTBI clients, with a spot for LTHD contact information.
- [How can I prevent tuberculosis \(TB\)? P-02504](#) – An infographic outlining steps people can take to prevent TB (also available in Rohingya, Vietnamese, Somali, Hindi, Dari, Hmong, Burmese, Kirundi, Russian, Ukrainian, and Spanish)
- [Wisconsin TB cases by local public health regions and county, P-00438 \(PDF\)](#) – A fact sheet with number of active TB disease cases by region and county.
- [Local Public Health in Wisconsin](#) – A link to local public health departments in Wisconsin.
- [Biosafety Recommendations for Individuals Handling Carcasses from Animals Known or Suspected to Have Tuberculosis, P-00295 \(PDF\)](#) – A fact sheet with information for safe management of animal carcasses.
- [Bureau of Communicable Disease Archived Webinar page](#) – A link to archived webinars on different communicable disease topics, including TB.

Patient HIV Education

[P-03576](https://www.dhs.wisconsin.gov/publications/p03576.pdf)

<https://www.dhs.wisconsin.gov/publications/p03576.pdf>

DO YOU KNOW YOUR HIV STATUS?

If you have active Tuberculosis (TB) disease, you should be tested for HIV.

- Active TB disease can cause HIV to progress faster.
- Untreated HIV can progress to AIDS. AIDS impacts your body's ability to fight off illnesses, including TB.



The CDC estimates that approximately 1 in 5 people who have HIV don't know they have it.

How can you get an HIV test?

Contact your doctor and ask them about getting an HIV test. This testing is covered by most insurance plans or through public health.

Need access to an HIV test?

DHS is partnering with Simple Health Kit to provide free at-home HIV tests that get sent to your door step. Ask your provider about the special access code for people with TB to order your kit.



Need additional support?

Receiving a TB or HIV diagnosis can be scary, but you are not alone. We are TB is a resource for you to participate in online support groups to get additional social support.



Clinician HIV Education

[P-03576a](https://www.dhs.wisconsin.gov/publications/p03576a.pdf)

<https://www.dhs.wisconsin.gov/publications/p03576a.pdf>



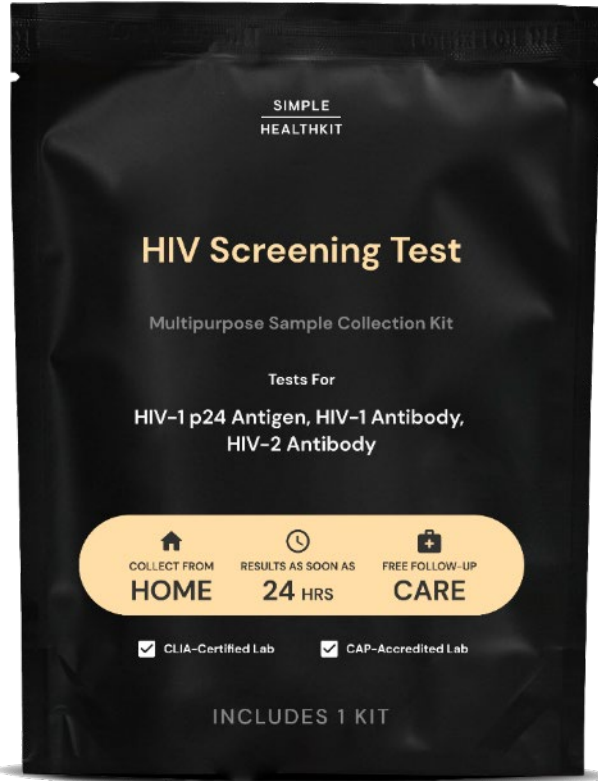
DO YOU KNOW YOUR TB PATIENT'S HIV STATUS?



If your patient has active TB disease, here are a few reasons you should order them an HIV test:

- We recommend testing every patient with TB for HIV regardless of other risk factors.
- Active TB is a known risk factor for HIV.
- HIV increases the risk of acquiring *M. tuberculosis*.¹
- TB accelerates HIV progression to stage 3 (AIDS), and HIV accelerates LTBI progression to active TB disease.^{2,3}
- Globally, 6.7% of people newly diagnosed with TB in 2021 were also living with HIV.⁴
- In an 8-year study, 20.9% of patients diagnosed with TB and HIV did not survive.⁵

SIMPLE HEALTHKIT



- At-home HIV testing is now available.
- Cost is covered by the Wisconsin TB Dispensary Program.
- Contact the WTBP to order a test kit.

Wisconsin Tuberculosis Manual

Surveillance

Targeted Testing for LTBI

Infection Control

Patient Education

...and more!

**Coming soon in
2025!**



Recorded Webinars

On demand training on LTBI, respiratory isolation guidelines, financial assistance, and more!

<https://www.dhs.wisconsin.gov/tb/health-pros.htm>

Recorded webinars from the Wisconsin TB Program

- [Latent Tuberculosis Infection: What You Need to Know](#) (March 18, 2025): Learn what latent tuberculosis is, how often it is diagnosed in Wisconsin, and how it is treated. Passcode: Cal*m!0V [View the Latent Tuberculosis Infection: What You Need to Know \(PDF\)](#).
- [Updated Guidelines for Tuberculosis Isolation in the Community](#) (October 16, 2024): The Wisconsin Department of Health Services (DHS) has issued DPH Numbered Memo [BCD 2024-03: Wisconsin Tuberculosis Statement on the National Tuberculosis Coalition of America \(NTCA\) Guidelines for Respiratory Isolation and Restrictions to Reduce Transmission of Pulmonary Tuberculosis in Community Settings \(PDF\)](#). Review the Wisconsin TB Program recommendations for implementing the updated guidance on community respiratory isolation and restrictions (RIR) for people with TB (PWTB) in the state of Wisconsin. Passcode: ir?!^.?0 [View the Updated Guidelines for TB Isolation in the Community recorded webinar \(PDF\)](#).
- [IGRA for Nurses](#) (September 27, 2022): Learn about Interferon Gamma Release Assay (IGRA) blood tests and how they are used to identify patients with past or infection with TB. This knowledge will allow nurses to identify which indeterminate or borderline test results require follow-up.
- [TB 101 \(PDF\)](#) (August 24, 2021): Learn general concepts about TB. [View the IGRA for Nurses recorded webinar](#).
- DHS TBLTBI Training for New Staff (April, 2023): A webinar by the Wisconsin TB Program introducing TB and LTBI concepts and reporting for new LTHD staff. View the recording of this webinar. [View the DHS TBLTBI Training for New Staff recorded webinar](#).
- [Financial Assistance through the Wisconsin Tuberculosis Program \(PDF\)](#) (Sept. 14, 2021): Geared towards local health departments, learn more about resources available for evaluating and treating patients with TB and latent TB infection, including the TB Dispensary and the TB Treatment Assistance Programs. [View the Financial Assistance through the Wisconsin Tuberculosis Program recorded webinar](#).
- [Evaluation for TB Disease and TB Case Management \(PDF\)](#) (Sept. 28, 2021): Learn about nurse care management for active TB disease. [View the Evaluation for TB Disease and TB Case Management recorded webinar](#).
- [The TB Laboratory \(PDF\)](#) (Oct. 12, 2021, Simon, reproduced with permission): Learn about collecting specimens and interpreting testing for TB. [View the TB Laboratory recorded webinar](#).

Check out additional [archived webinars](#) from the Bureau of Communicable Diseases.

Medical Consultation through WTBP

- **Dr. E. Ann Misch** is an infectious disease physician who joined WTBP in 2022.
- Consults are available for active TB.
- Interested clinicians **contact the main WI TB Program inbox** to request a consult.



Contact Investigation Support through WTBP

- **Yzejma Jashari** is a disease intervention specialist who joined WTBP in April 2023.
- She assists in the education and follow up of TB close contacts.
- She also helps order HIV SHK testing at home to patients with active disease.



Wisconsin TB and Refugee Health Program Staff at DHS



Claire
Leback



Pat
Heger



Mary
Raschka



Andrea
Liptack



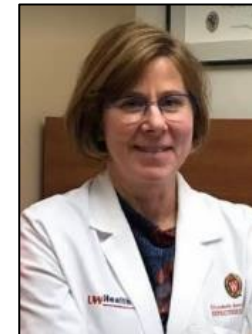
Yzejma
Jashari



Julie Tans
Kersten



Madison
Xiong



Dr. E. Ann
Misch



Questions?

TB Program Contact Information

- **Phone:** 608-261-6319
- **Fax:** 608-266-0049
- **Email:**
DHSWITBProgram@dhs.wisconsin.gov
- **WTBP Website:**
www.dhs.wi.gov/tb/index.htm

