



WISCONSIN DEPARTMENT
of HEALTH SERVICES

Mary Raschka BSN,
RN

April 8, 2025

Updated Respiratory Isolation Restrictions for Tuberculosis in Wisconsin

How's it going so far?

October 2024 Roll Out



DPH Numbered Memo [BCD 2024-03: Wisconsin Tuberculosis Statement on the National Tuberculosis Coalition of America \(NTCA\) Guidelines for Respiratory Isolation and Restrictions to Reduce Transmission of Pulmonary Tuberculosis in Community Settings](#)



The new guidance was presented at multiple meetings with public health staff from local and Tribal health departments.

Spectrum-Based Approach

Extensive Restriction

Midlevel/ Moderate
Restriction

No Restriction

Why?



Evidence

Ethical
Framework

Socioeconomic
and Cultural
Barriers

How Long is Isolation in Wisconsin?

- Average length of isolation was calculated
- Cases in 2024 prior to 10/01/24 were used as baseline/"before"
- Cases in 2024 after 10/01/24 were used as "after"

How Long is Isolation in Wisconsin?

Average length of isolation was calculated:

“Before”

Cases in 2024
prior to
10/01/24

“After”

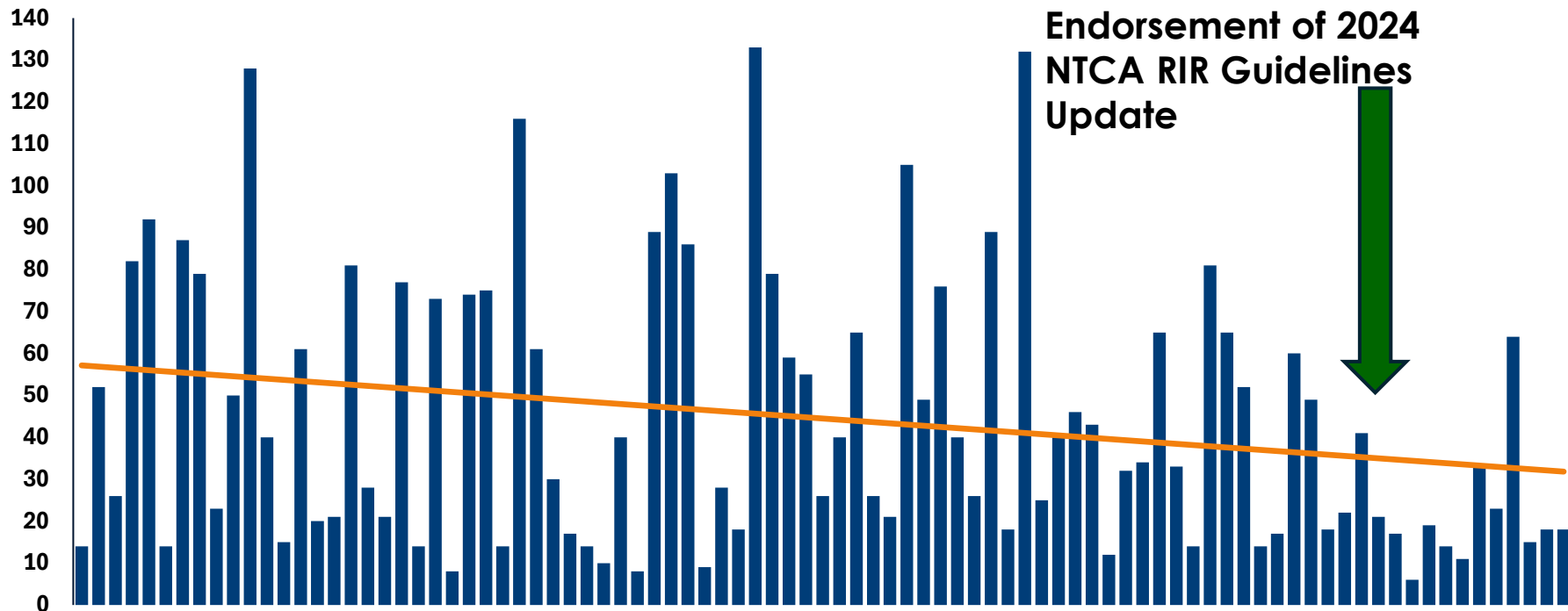
Cases in 2024
after
10/01/24.

Average Length of Isolation Decreased After Endorsement of NTCA RIR Guidelines

50.0
days in isolation
before
endorsement

30.8
days in isolation
after
endorsement

Number of Days in Isolation Has Trended Down



Obstacles for Implementation

- Hesitancy to apply new guidance to patients with higher burden of disease.
- Patients may live in community but work or visit high risk settings, resulting in a tiered release.
- Unclear applicability to different types of TB with resistance to first-line medications.

Wisconsin TB and Refugee Health Program at DHS:



Claire
Leback



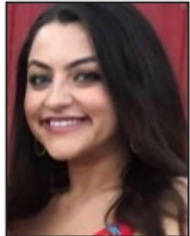
Pat Heger



Mary
Raschka



Andrea
Liptack



Yzejma
Jashari



Julie Tans
Kersten



Madison
Xiong



Dr. E. Ann
Misch

TB Program Contact Information

Please, call or email us with questions!



Main TB Phone Line: 608-261-6319



Fax: 608-266-0049



TB Program Email:

DHSWITBProgram@dhs.wisconsin.gov



Website:

www.dhs.wisconsin.gov/tb/index.htm